

# CD4430 LOAD CHART

Badger Equipment Co.  
217 Patneau Dr.  
Winona, Minnesota 55987  
Ph. 507-454-1563

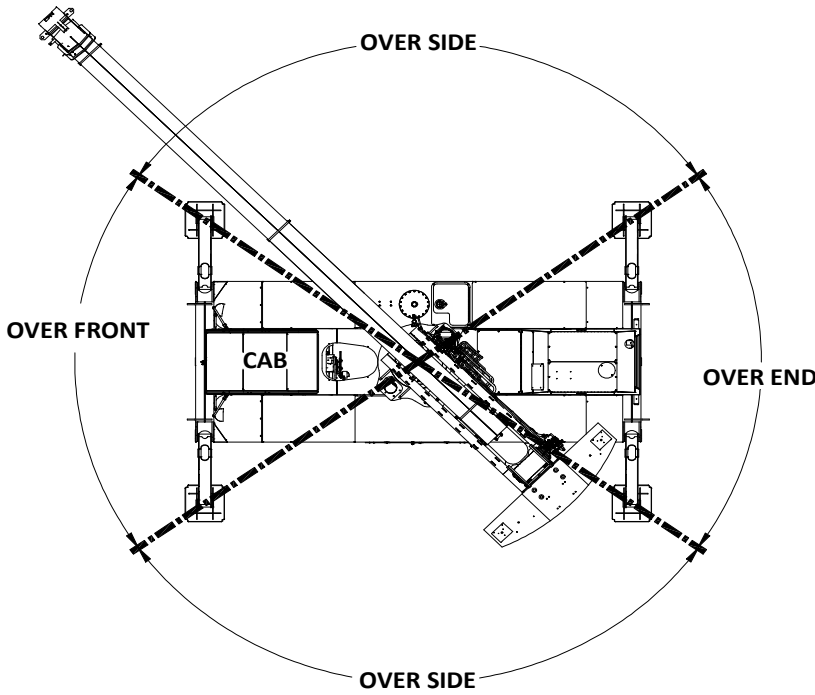
LIFTING CAPACITIES - POUNDS  
3 SECTION (31'-75' BOOM)

## ON OUTRIGGERS

LOAD RADIUS (FT)	BOOM LENGTH (FT)																		LOAD RADIUS (FT)
	31			40			50			60			70			75			
BOOM ANGLE (DEG)	OVER FRONT (LB)	360° (LB)	BOOM ANGLE (DEG)	OVER FRONT (LB)	360° (LB)	BOOM ANGLE (DEG)	OVER FRONT (LB)	360° (LB)	BOOM ANGLE (DEG)	OVER FRONT (LB)	360° (LB)	BOOM ANGLE (DEG)	OVER FRONT (LB)	360° (LB)	BOOM ANGLE (DEG)	OVER FRONT (LB)	360° (LB)	LOAD RADIUS (FT)	
10	61	60,000	60,000	68	55,000	55,000												10	
12	57	50,000	50,000	65	50,000	50,000	70	45,000	45,000									12	
15	50	40,000	40,000	60	40,000	40,000	66	37,500	37,500	71	35,000	35,000						15	
20	36	30,000	25,500	51	30,000	25,500	60	29,000	25,500	65	28,000	25,500	69	28,000	25,500			20	
25	15	24,000	17,000	41	24,000	17,000	53	24,000	17,000	60	24,000	17,000	65	22,000	17,000	66	20,000	17,000	25
30				29	20,000	14,000	46	18,000	14,000	54	17,000	14,000	60	16,500	14,000	62	16,500	14,000	30
35				0	17,100	10,600	37	17,000	10,600	48	16,500	10,600	55	15,700	10,600	58	15,000	10,600	35
40							26	11,900	8,500	41	11,900	8,500	50	11,900	8,500	53	11,900	8,500	40
45							0	9,300	6,800	34	9,300	6,800	44	9,300	6,800	48	9,300	6,800	45
50										24	8,000	5,500	38	8,000	5,500	43	8,000	5,500	50
55										0	6,800	4,650	31	6,800	4,750	37	6,800	4,750	55
60													22	5,950	4,000	30	5,950	4,000	60
65													0	5,650	3,400	21	5,650	3,400	65
70																0	5,400	2,950	70

## ON TIRES (1600 X 25-32 PR)

LOAD RADIUS (FT)	MAX BOOM LENGTH (FT)	STATIONARY		PICK & CARRY		LOAD RADIUS (FT)
		360° (LB)	OVER FRONT DEFFINED ARC (LB)	CREEP	2.5 MPH STR OVER FRONT (LB)	
10	31	18,000	33,000	25,000	21,000	10
12	31	15,000	29,000	22,000	18,000	12
15	40	11,000	23,000	17,500	15,000	15
20	40	7,000	15,000	13,000	11,000	20
25	45	5,000	11,000	9,000	8,000	25
30	45	3,000	7,000	7,000	6,000	30
35	45	2,000	6,000	6,000	5,000	35
40	53	1,500	5,000	5,000	4,000	40
45	60		3,500	3,500	3,500	45
50	65		3,000	3,000	3,000	50
55	70		2,000	2,000	2,000	55
60	70		1,400	1,400	1,400	60
65	75		1,000	1,000	1,000	65



## ON OUTRIGGERS

### NOTES:

- All operators and support personnel shall read and fully understand manufacturer furnished operator's manual, latest applicable American National Standards Institute (ANSI) Safety Standards for Cranes, and any applicable federal, state, or local safety regulations before operating machine. Crane and load ratings comply with ANSI and Power Crane & Shovel Association (PCSA) Standards.
- All "ON OUTRIGGER" lifts shall be made with outrigger arms fully extended to fully support and level machine (tires off supporting surface). Additional structural blocking or cribbing may be required for some applications.
- All ratings where reversed text appears are based on 85% of tipping load "ON OUTRIGGERS" and 75% of tipping "ON TIRES" with machine stable on firm level ground. Ratings where text is not reversed are based on structural competence. Boom angles are undeflected boom angles.
- DO NOT EXCEED crane load ratings. When load radius or boom angle are between listed values, use the smaller load rating. DO NOT ATTEMPT TO TIP MACHINE TO DETERMINE ALLOWABLE LOADS.
- Weights of hook blocks, bucket, slings, and all other load handling devices are not accounted for in the load chart. The load handling devices must be considered as part of the load.
- Reduce ratings appropriately for wind conditions, speed of operation, soft or uneven supporting surfaces, etc.



### CAUTION

IN WIND OVER 30 MPH, CEASE OPERATION;  
POSITION BOOM AWAY FROM WIND AND LOWER  
BOOM BELOW 60°.

IN WIND OVER 50 MPH,  
FULLY RETRACT AND LOWER BOOM  
TO LOWEST POSSIBLE POSITION.

- Load ratings apply to this machine only as originally manufactured and equipped. Unauthorized modification or optional equipment may reduce load capacity. Please consult Badger Equipment BEFORE modification or use of optional equipment not covered in this chart.
- DO NOT lift over operator cab.
- These load ratings are for lift service only.



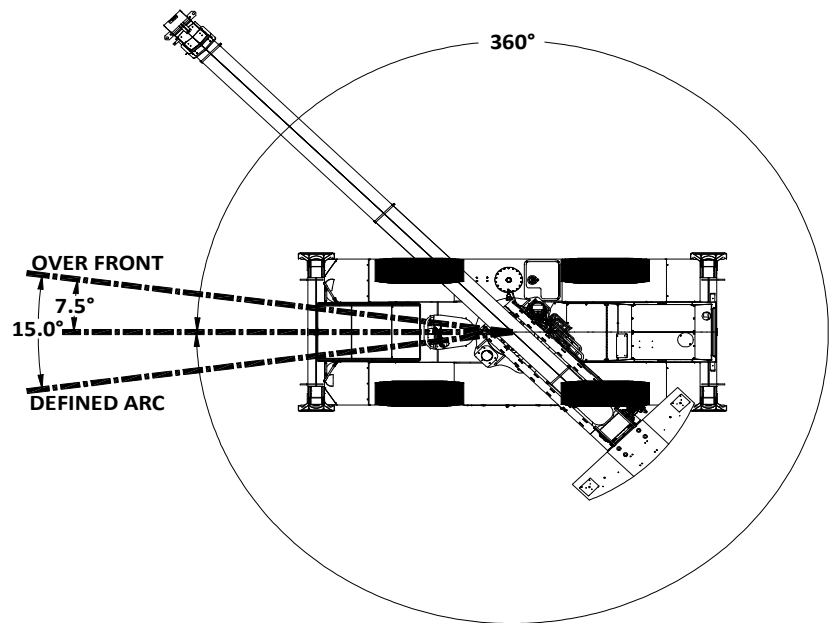
### WARNING

- Pick and carry load ratings are shown in load chart for on tires. Boom must be above 0°.
- Load shall be restrained from swinging and shall be positioned as close to the ground as possible over the front along the carrier's lengthwise centerline. DO NOT exceed 2.5 MPH (4 Km/h) travel speed using smooth starts and stops. "Creep" is movement not to exceed 200 ft in a 30 min period. Other crane operations SHALL NOT be permitted when transporting a load.
- Recommended tire sizes and inflation pressures are;

30 & 25 Ton Capacity  
16.00-25 - 32 Ply  
Static - 125 PSI  
Creep - 125 PSI  
Travel - 95 PSI

OPTIONAL - Foam Filled Tires

RECOMMENDATIONS:  
5/8" - 6 x 19 Class - 6 x 25 FW, PRF, RRL, XIP, IWRC Wire Rope



## ON TIRES

