

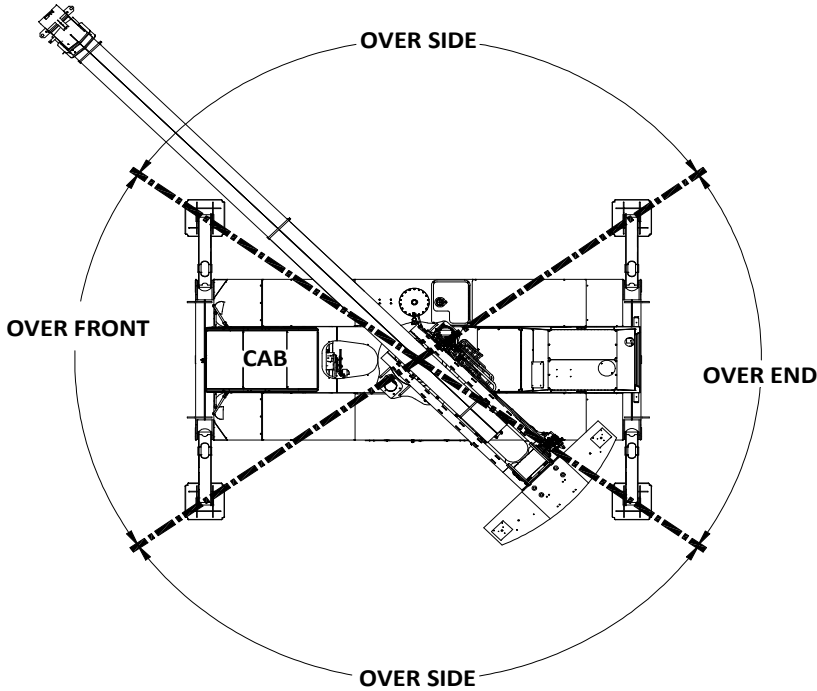
CD4430 LOAD CHART

Badger Equipment Co.
217 Patneau Dr.
Winona, Minnesota 55987
Ph. 507-454-1563

LIFTING CAPACITIES - METRIC TONNES
3 SECTION (9.5-22.8 METER BOOM)

ON OUTRIGGERS

LOAD RADIUS (M)	BOOM LENGTH (M)																		LOAD RADIUS (M)
	9.5			12.2			15.2			18.3			21.3			22.8			
BOOM ANGLE (DEG)	OVER FRONT (MTON)	360° (MTON)	BOOM ANGLE (DEG)	OVER FRONT (MTON)	360° (MTON)	BOOM ANGLE (DEG)	OVER FRONT (MTON)	360° (MTON)	BOOM ANGLE (DEG)	OVER FRONT (MTON)	360° (MTON)	BOOM ANGLE (DEG)	OVER FRONT (MTON)	360° (MTON)	BOOM ANGLE (DEG)	OVER FRONT (MTON)	360° (MTON)	LOAD RADIUS (M)	
3	61	27.2	27.2	68	24.9	24.9												3	
3.5	58	23.8	23.8	66	23.2	23.2	71	20.9	20.9									3.5	
4	54	20.9	20.9	63	20.9	20.9	69	19.1	19.1	72	17.0	17.4						4	
4.5	51	18.5	18.5	60	18.5	18.5	67	17.2	17.2	71	16.0	16.0						4.5	
5	47	16.8	16.2	58	16.8	16.2	65	15.9	15.4	69	14.9	14.6						5	
6	38	13.8	11.9	52	13.8	11.9	60	13.3	11.9	66	12.9	11.8	69	12.8	10.8	71	10.7	9.1	6
7	26	11.9	9.2	46	11.9	9.2	56	11.8	9.2	62	11.6	9.2	66	11.0	9.2	68	9.7	8.2	7
8				39	10.4	7.3	51	10.2	7.3	59	10.0	7.3	63	9.3	7.3	65	8.6	7.3	8
9				30	9.2	6.4	46	8.4	6.4	55	8.0	6.4	60	7.7	6.4	63	7.6	6.4	9
10				31	8.3	5.4	41	7.9	5.4	51	7.5	5.4	57	7.2	5.4	60	7.1	5.4	10
12							27	5.6	3.9	42	5.6	3.9	51	5.6	3.9	54	5.5	3.9	12
14										32	4.1	2.9	43	4.1	2.9	47	4.1	2.9	14
16										17	3.3	2.3	35	3.3	2.3	40	3.3	2.3	16
18													24	2.7	2.2	31	2.7	2.2	18
20																19	2.5	1.5	20



ON OUTRIGGERS

NOTES:

- All operators and support personnel shall read and fully understand manufacturer furnished operator's manual, latest applicable American National Standards Institute (ANSI) Safety Standards for Cranes, and any applicable federal, state, or local safety regulations before operating machine. Crane and load ratings comply with ANSI and Power Crane & Shovel Association (PCSA) Standards.
- All "ON OUTRIGGER" lifts shall be made with outrigger arms fully extended to fully support and level machine (tires off supporting surface). Additional structural blocking or cribbing may be required for some applications.
- All ratings where reversed text appears are based on 85% of tipping load "ON OUTRIGGERS" and 75% of tipping "ON TIRES" with machine stable on firm level ground. Ratings where text is not reversed are based on structural competence. Boom angles are undeflected boom angles.
- DO NOT EXCEED crane load ratings. When load radius or boom angle are between listed values, use the smaller load rating. DO NOT ATTEMPT TO TIP MACHINE TO DETERMINE ALLOWABLE LOADS.
- Weights of hook blocks, bucket, slings, and all other load handling devices are not accounted for in the load chart. The load handling devices must be considered as part of the load.
- Reduce ratings appropriately for wind conditions, speed of operation, soft or uneven supporting surfaces, etc.

CAUTION

IN WIND OVER 48 Km/h, CEASE OPERATION;
POSITION BOOM AWAY FROM WIND AND LOWER
BOOM BELOW 60°.

IN WIND OVER 80 Km/h,
FULLY RETRACT AND LOWER BOOM
TO LOWEST POSSIBLE POSITION.

- Load ratings apply to this machine only as originally manufactured and equipped. Unauthorized modification or optional equipment may reduce load capacity. Please consult Badger Equipment BEFORE modification or use of optional equipment not covered in this chart.
- DO NOT lift over operator cab.
- These load ratings are for lift service only.

WARNING

- Pick and carry load ratings are shown in load chart for on tires. Boom must be above 0°.
- Load shall be restrained from swinging and shall be positioned as close to the ground as possible over the front along the carrier's lengthwise centerline. DO NOT exceed 4 Km/h travel speed using smooth starts and stops. "Creep" is movement not to exceed 60.9 meters in a 30 min period. Other crane operations SHALL NOT be permitted when transporting a load.

- Recommended tire sizes and inflation pressures are;

27.2 Mton Capacity
16.00-25 - 32 Ply
Static - 861 kPa
Creep - 861 kPa
Travel - 655 kPa

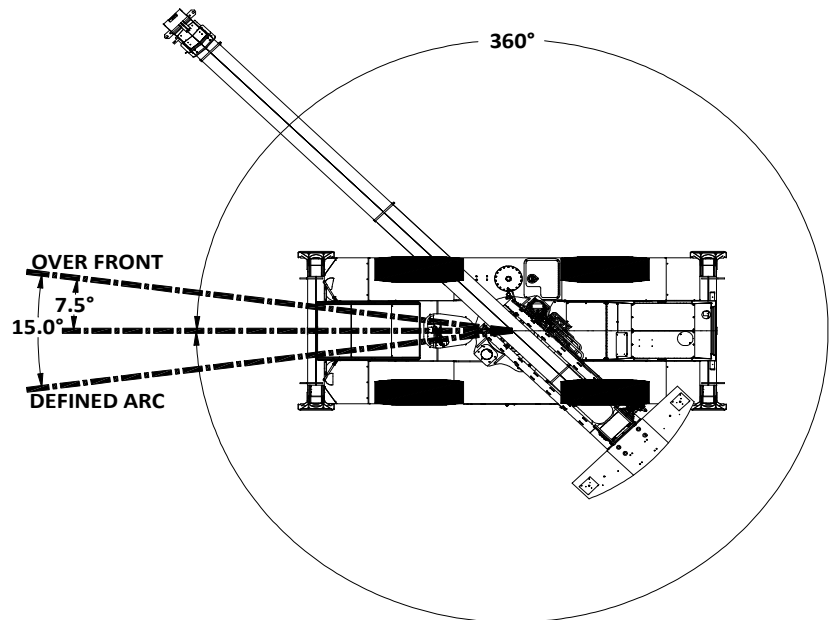
OPTIONAL - Foam Filled Tires

RECOMMENDATIONS:

5/8" - 6 x 19 Class - 6 x 25 FW, PRF, RRL, XIP, IWRC Wire Rope

ON TIRES (1600 X 25-32 PR)

LOAD RADIUS (M)	MAX BOOM LENGTH (M)	STATIONARY		PICK & CARRY		LOAD RADIUS (M)
		360° (MTON)	STRAIGHT OVER FRONT (MTON)	CREEP	4.0 KPH	
3	9.4	8.1	14.9	11.3	9.5	3
3.5	9.4	7.1	13.6	10.3	8.5	3.5
4	9.4	6.1	12.1	9.2	7.6	4
4.5	12	5.1	10.6	8.0	6.9	4.5
5	12	4.4	9.4	7.3	6.2	5
6	12	3.2	7.0	6.0	5.1	6
7	13.6	2.6	5.7	4.8	4.1	7
8	13.6	2.0	4.5	3.8	3.4	8
9	13.6	1.4	3.3	3.2	2.8	9
10	13.6	1.1	2.9	2.9	2.4	10
12	16	0.7	2.3	2.3	1.8	12
14	18		1.5	1.5	1.5	14
16	21		1.1	1.1	1.1	16
18	21		0.6	0.6	0.6	18



ON TIRES

