

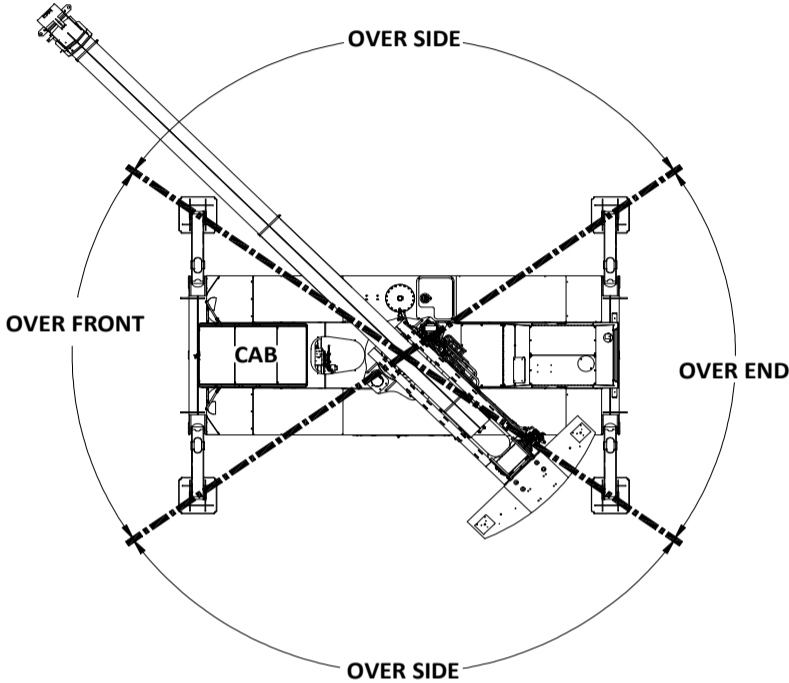
# CD4420 LOAD CHART

Badger Equipment Co.  
217 Patneau Dr.  
Winona, Minnesota 55987  
Ph. 507-454-1563

LIFTING CAPACITIES - POUNDS  
3 SECTION (31'-75' BOOM)

## ON OUTRIGGERS

LOAD RADIUS (FT)	BOOM LENGTH (FT)																		LOAD RADIUS (FT)
	31			40			50			60			70			75			
BOOM ANGLE (DEG)	OVER FRONT (LB)	360° (LB)	BOOM ANGLE (DEG)	OVER FRONT (LB)	360° (LB)	BOOM ANGLE (DEG)	OVER FRONT (LB)	360° (LB)	BOOM ANGLE (DEG)	OVER FRONT (LB)	360° (LB)	BOOM ANGLE (DEG)	OVER FRONT (LB)	360° (LB)	BOOM ANGLE (DEG)	OVER FRONT (LB)	360° (LB)	LOAD RADIUS (FT)	
10	61	40,000	40,000	68	40,000	40,000												10	
12	57	33,300	33,300	65	33,300	33,300	70	33,000	33,000									12	
15	50	26,600	26,600	60	26,600	26,600	66	26,600	26,600	71	26,600	26,600						15	
20	36	20,000	20,000	51	20,000	20,000	60	20,000	20,000	65	20,000	20,000	69	20,000	20,000			20	
25	15	16,000	16,000	41	16,000	16,000	53	16,000	16,000	60	16,000	16,000	65	16,000	16,000	66	16,000	25	
30				29	13,300	13,300	46	13,300	13,300	54	13,300	13,300	60	13,300	13,300	62	13,300	30	
35				0	11,400	10,600	37	11,400	10,600	48	11,400	10,600	55	11,400	10,600	58	11,400	35	
40							26	10,000	8,500	41	10,000	8,500	50	10,000	8,500	53	10,000	40	
45							0	8,850	6,800	34	8,850	6,800	44	8,850	6,800	48	8,850	45	
50										24	8,000	5,500	38	8,000	5,500	43	8,000	50	
55										0	6,800	4,650	31	6,800	4,750	37	6,800	55	
60													22	5,950	4,000	30	5,950	60	
65													0	5,650	3,400	21	5,650	65	
70																0	5,400	70	



## ON OUTRIGGERS

### NOTES:

- All operators and support personnel shall read and fully understand manufacturer furnished operator's manual, latest applicable American National Standards Institute (ANSI) Safety Standards for Cranes, and any applicable federal, state, or local safety regulations before operating machine. Crane and load ratings comply with ANSI and Power Crane & Shovel Association (PCSA) Standards.
- All "ON OUTRIGGER" lifts shall be made with outrigger arms fully extended to fully support and level machine (tires off supporting surface). Additional structural blocking or cribbing may be required for some applications.
- All ratings where reversed text appears are based on 85% of tipping load "ON OUTRIGGERS" and 75% of tipping "ON TIRES" with machine stable on firm level ground. Ratings where text is **not** reversed are based on structural competence. Boom angles are undeflected boom angles
- DO NOT EXCEED crane load ratings. When load radius or boom angle are between listed values, use the smaller load rating. DO NOT ATTEMPT TO TIP MACHINE TO DETERMINE ALLOWABLE LOADS.
- Weights of hook blocks, bucket, slings, and all other load handling devices are not accounted for in the load chart. The load handling devices must be considered as part of the load.
- Reduce ratings appropriately for wind conditions, speed of operation, soft or uneven supporting surfaces, etc.



**CAUTION**  
IN WIND OVER 30 MPH, CEASE OPERATION;  
POSITION BOOM AWAY FROM WIND AND LOWER  
BOOM BELOW 60°.

IN WIND OVER 50 MPH,  
FULLY RETRACT AND LOWER BOOM  
TO LOWEST POSSIBLE POSITION.

- Load ratings apply to this machine only as originally manufactured and equipped. Unauthorized modification or optional equipment may reduce load capacity. Please consult Badger Equipment BEFORE modification or use of optional equipment not covered in this chart.
- DO NOT lift over operator cab.
- These load ratings are for lift service only.
- WARNING**
- Pick and carry load ratings are shown in load chart for on tires. Boom must be above 0°.
- Load shall be restrained from swinging and shall be positioned as close to the ground as possible over the front along the carrier's lengthwise centerline. **DO NOT** exceed 2.5 MPH (4 Km/h) travel speed using smooth starts and stops. "Creep" is movement not to exceed 200 ft in a 30 min period. Other crane operations **SHALL NOT** be permitted when transporting a load.
- Recommended tire sizes and inflation pressures are;

20 Ton Capacity  
17.5-25 - 20 Ply  
Static - 90 PSI  
Creep - 90 PSI  
Travel - 70 PSI

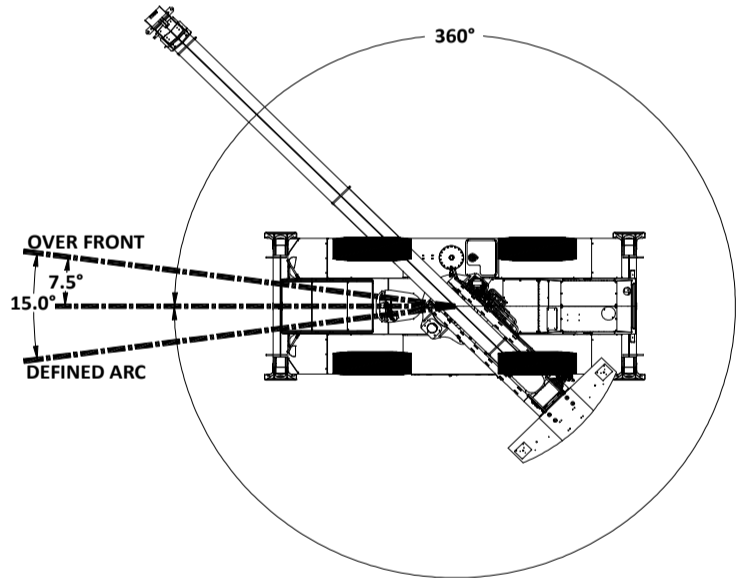
OPTIONAL - Foam Filled Tires

### RECOMMENDATIONS:

5/8" - 6 x 19 Class - 6 x 25 FW, PRF, RRL, XIP, IWRC Wire Rope

## ON TIRES (17.5 X 25-20 PR)

LOAD RADIUS (FT)	MAX BOOM LENGTH (FT)	STATIONARY			PICK & CARRY		LOAD RADIUS (FT)
		360° (LB)	OVER FRONT DEFINED ARC (LB)	CREEP	2.5 MPH		
10	31	18,000	26,000	18,400	14,600	10	
12	31	13,700	22,900	16,200	12,800	12	
15	40	10,100	19,500	13,800	10,900	15	
20	40	7,000	15,000	11,000	8,700	20	
25	45	5,000	11,000	9,000	7,300	25	
30	45	3,000	7,000	7,000	6,000	30	
35	45	2,000	6,000	6,000	5,000	35	
40	53	1,500	5,000	5,000	4,000	40	
45	60		3,500	3,500	3,500	45	
50	65		3,000	3,000	3,000	50	
55	70		2,000	2,000	2,000	55	
60	70		1,400	1,400	1,400	60	
65	75		1,000			65	



## ON TIRES

