

# CD4430R LOAD CHART

LIFTING CAPACITIES - POUNDS  
2 SECTION (30.5'-53' BOOM)

Badger Equipment Co.  
217 Patneau Drive  
Winona, Minnesota 55987  
Ph. 507-454-1563

## ON OUTRIGGERS

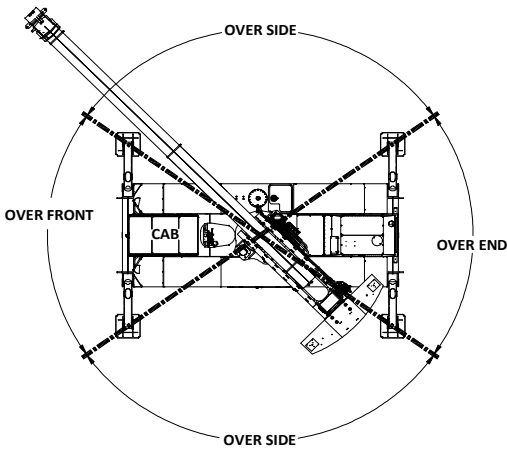
LOAD RADIUS (FT)	BOOM LENGTH (FT)																		LOAD RADIUS (FT)
	31			35			40			45			50			53			
BOOM ANGLE (DEG)	OVER FRONT (LB)	360° (LB)	BOOM ANGLE (DEG)	OVER FRONT (LB)	360° (LB)	BOOM ANGLE (DEG)	OVER FRONT (LB)	360° (LB)	BOOM ANGLE (DEG)	OVER FRONT (LB)	360° (LB)	BOOM ANGLE (DEG)	OVER FRONT (LB)	360° (LB)	BOOM ANGLE (DEG)	OVER FRONT (LB)	360° (LB)	LOAD RADIUS (FT)	
10	61	60,000	60,000	65	55,000	55,000	68	55,000	55,000	71	55,000	55,000						10	
12	57	50,000	50,000	61	50,000	50,000	65	50,000	50,000	68	50,000	50,000	70	45,000	45,000	71	42,000	42,000	12
15	50	40,000	40,000	55	40,000	40,000	60	40,000	40,000	64	40,000	40,000	66	40,000	40,000	68	33,600	33,600	15
20	36	30,000	30,000	44	30,000	30,000	51	30,000	30,000	56	30,000	30,000	60	30,000	30,000	62	30,000	25,200	20
25	15	24,000	22,800	31	24,000	22,800	41	24,000	22,800	48	24,000	22,800	53	22,000	20,000	56	20,000	20,000	25
30				0	20,000	16,900	29	20,000	16,900	39	20,000	16,900	46	18,000	15,000	49	16,000	15,000	30
35							0	17,100	13,100	27	17,100	11,000	37	14,000	11,000	41	14,000	11,000	35
40										0	14,000	8,500	26	12,000	8,500	32	12,000	8,500	40
45													0	10,000	7,800	19	10,000	7,800	45
48																0	9,000	6,700	48

## TIRES

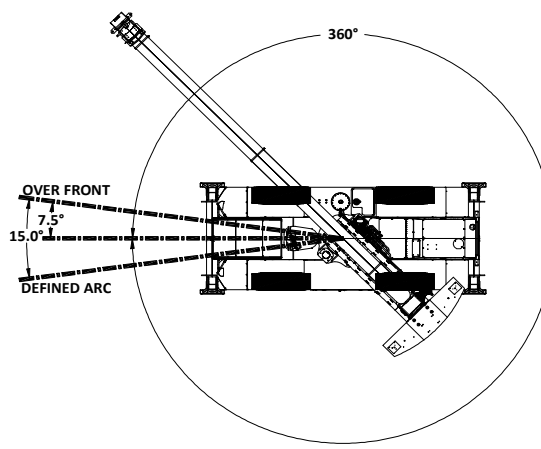
LOAD RADIUS (FT)	MAX BOOM LENGTH (FT)	STATIONARY		PICK & CARRY		LOAD RADIUS (FT)
		360° (LB)	OVER FRONT DEFINED ARC (LB)	CREEP	2.5 MPH STR OVER FRONT (LB)	
10	30.5	18,000	33,000	25,000	21,000	10
12	30.5	15,000	29,000	22,000	18,000	12
15	40	11,000	23,000	17,500	15,000	15
20	40	7,000	15,000	13,000	11,000	20
25	45	5,000	11,000	9,000	8,000	25
30	45	3,000	7,000	7,000	6,000	30
35	45	2,000	6,000	6,000	5,000	35
40	53	1,500	5,000	5,000	4,000	40
45	53		3,500	3,500	3,500	45
48	53		3,000	3,000	3,000	48

## RAIL

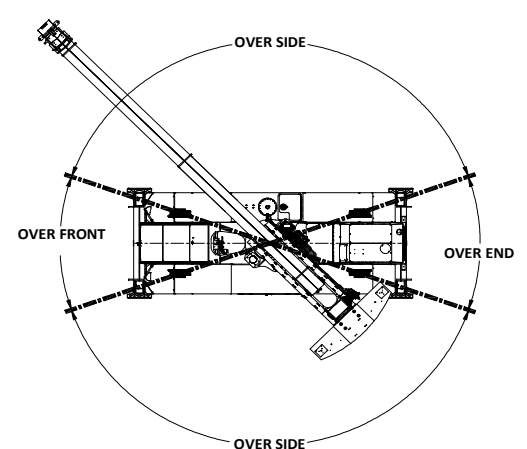
LOAD RADIUS (FT)	MAX BOOM LENGTH (FT)	360° STATIONARY (LB)			15 DEG DEFINED ARC OVER FRONT (LB)			LOAD RADIUS (FT)	MAX NO LOAD BOOM ANGLE (DEG)	
		0 MPH	SUPERELEVATION		0 MPH	CREEP (SUPERELEVATION)				
			< 2 IN	2 < 4 IN		4 < 6 IN	< 2 IN			2 < 4 IN
10	30.5	18,000					39,750		10	61
12	30.5	16,100					35,250	28,200	12	56
15	30.5	13,500	10,800	9,000	7,200	30,000	24,000	20,000	15	49
20	35	9,150	7,320	6,100	4,880	22,500	18,000	15,000	20	44
25	37	5,250	4,200	3,500	2,800	17,400	13,920	11,600	25	36
30	40	4,300	3,456	2,880	2,304	13,425	10,740	8,950	30	29
35	45	3,500	2,805	2,338	1,870	10,500	8,400	7,000	35	27
40	50	2,700	2,220	1,850	1,480	8,475	6,780	5,650	40	26
45	53	2,000	1,620	1,350	1,080	7,050	5,640	4,700	45	19
48	53	1,700	1,356	1,130	904	6,450	5,160	4,300	48	0



ON OUTRIGGERS



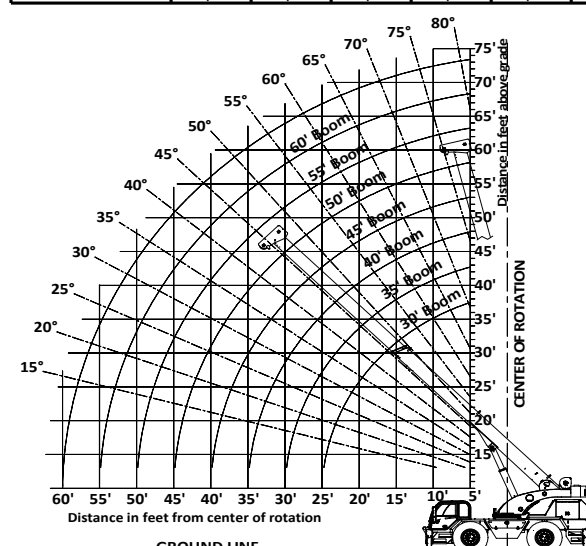
ON TIRES



ON RAIL

BOLD LINES DETERMINE THE LIMITING POSITION OF ANY LOAD FOR OPERATION WITHIN WORKING AREA INDICATED

PARTS OF LINE	1	2	3	4	5	6
MAX. HOOK LOAD	10,000	20,000	30,000	40,000	50,000	60,000



- All operators and support personnel shall read and fully understand manufacturer furnished operator's manual, latest applicable American National Standards Institute (ANSI) Safety Standards for Cranes, and any applicable federal, state, or local safety regulations before operating machine. Crane and load ratings comply with ANSI and Power Crane & Shovel Association (PCSA) Standards.
- All "ON OUTRIGGER" lifts shall be made with outrigger arms fully extended to fully support and level machine (tires off supporting surface). Additional structural blocking or cribbing may be required for some applications.
- All ratings where reversed text appears are based on 85% of tipping load "ON OUTRIGGERS" and 75% of tipping "ON TIRES" with machine stable on firm level ground. Ratings where text is not reversed are based on structural competence. Boom angles are undeflected boom angles.
- DO NOT EXCEED crane load ratings. When load radius or boom angle are between listed values, use the smaller load rating. DO NOT ATTEMPT TO TIP MACHINE TO DETERMINE ALLOWABLE LOADS.
- Weights of hook blocks, bucket, slings, and all other load handling devices are not accounted for in the load chart. The load handling devices must be considered as part of the load.
- Reduce ratings appropriately for wind conditions, speed of operation, soft or uneven supporting surfaces, etc.

### CAUTION

IN WIND OVER 30 MPH, CEASE OPERATION;  
POSITION BOOM AWAY FROM WIND AND LOWER  
BOOM BELOW 60°.

IN WIND OVER 50 MPH,  
FULLY RETRACT AND LOWER BOOM  
TO LOWEST POSSIBLE POSITION.

- Load ratings apply to this machine only as originally manufactured and equipped. Unauthorized modification or optional equipment may reduce load capacity. Please consult Badger Equipment BEFORE modification or use of optional equipment not covered in this chart.
- DO NOT lift over operator cab.
- These load ratings are for lift service only.

### WARNING

- Pick and carry load ratings are shown in load chart for on tires, on rail and on rail with superelevation. Boom must be above 0°.
- Load shall be restrained from swinging and shall be positioned as close to the ground as possible over the front along the carrier's lengthwise centerline. DO NOT exceed 2.5 MPH (4 Km/h) travel speed using smooth starts and stops. Other crane operations SHALL NOT be permitted when transporting a load. Creep is traveling no more than 200 Ft. in a half hour.
- Recommended tire sizes and inflation pressures are

30 & 25 Ton Capacity  
16.00-25 - 32 Ply  
Static - 125 PSI  
Creep - 125 PSI  
Travel - 95 PSI

OPTIONAL - Foam Filled Tires

### RECOMMENDATIONS:

5/8" - 6 x 19 Class - 6 x 25 FW, PRF, RRL, XIP, IWRC Wire Rope