

# CD4425R LOAD CHART

Badger Equipment Co.  
217 Patneau Dr.  
Winona, Minnesota 55987  
Ph. 507-454-1563

LIFTING CAPACITIES - POUNDS  
2 SECTION (30.5'-53' BOOM)

## ON OUTRIGGERS

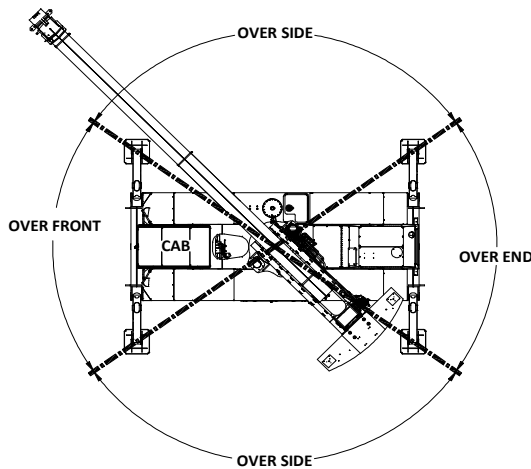
LOAD RADIUS (FT)	BOOM LENGTH (FT)																		LOAD RADIUS (FT)
	31			35			40			45			50			53			
	BOOM ANGLE (DEG)	OVER FRONT (LB)	360° (LB)	BOOM ANGLE (DEG)	OVER FRONT (LB)	360° (LB)	BOOM ANGLE (DEG)	OVER FRONT (LB)	360° (LB)	BOOM ANGLE (DEG)	OVER FRONT (LB)	360° (LB)	BOOM ANGLE (DEG)	OVER FRONT (LB)	360° (LB)	BOOM ANGLE (DEG)	OVER FRONT (LB)	360° (LB)	
10	61	50,000	50,000	65	45,800	45,800	68	45,800	45,800	71	45,800	45,800							10
12	57	41,650	41,650	61	41,650	41,650	65	41,650	41,650	68	41,650	41,650	70	37,500	37,500	71	35,000	35,000	12
15	50	33,300	33,300	55	33,300	33,300	60	33,300	33,300	64	33,300	33,300	66	33,300	33,300	68	28,000	28,000	15
20	36	25,000	25,000	44	25,000	25,000	51	25,000	25,000	56	25,000	25,000	60	25,000	25,000	62	25,000	25,000	20
25	15	20,000	20,000	31	20,000	20,000	41	20,000	20,000	48	20,000	20,000	53	20,000	20,000	56	20,000	20,000	25
30				0	16,650	16,650	29	16,650	16,650	39	16,650	16,650	46	16,650	15,000	49	16,000	15,000	30
35							0	14,250	13,100	27	14,250	11,000	37	14,000	11,000	41	14,000	11,000	35
40										0	12,500	8,500	26	12,000	8,500	32	12,000	8,500	40
45													0	10,000	7,800	19	10,000	7,800	45
48																0	9,000	6,700	48

## ON TIRES

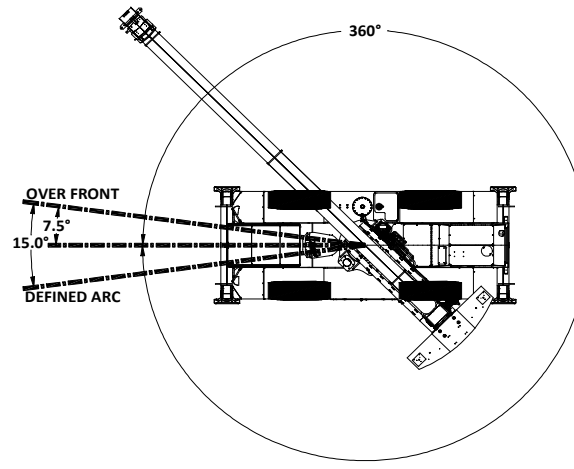
LOAD RADIUS (FT)	MAX BOOM LENGTH (FT)	STATIONARY		PICK & CARRY		LOAD RADIUS (FT)
		360° (LB)	OVER FRONT DEFINED ARC (LB)	CREEP	2.5 MPH	
				STR OVER FRONT (LB)		
10	30.5	18,000	33,000	25,000	21,000	10
12	30.5	15,000	29,000	22,000	18,000	12
15	40	11,000	23,000	17,500	15,000	15
20	40	7,000	15,000	13,000	11,000	20
25	45	5,000	11,000	9,000	8,000	25
30	45	3,000	7,000	7,000	6,000	30
35	45	2,000	6,000	6,000	5,000	35
40	53	1,500	5,000	5,000	4,000	40
45	53		3,500	3,500	3,500	45
48	53		3,000	3,000	3,000	48

## ON RAIL

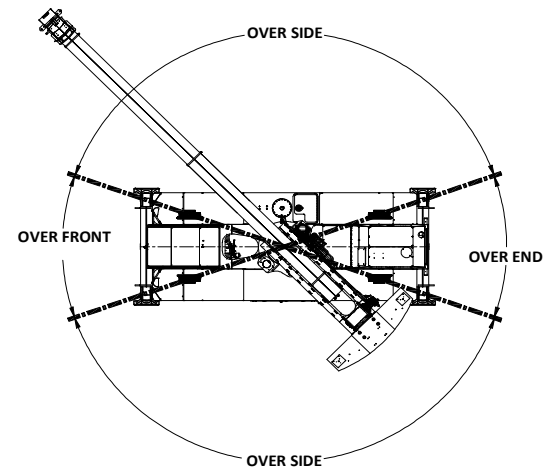
LOAD RADIUS (FT)	MAX BOOM LENGTH (FT)	360° STATIONARY (LB)				15 DEG DEFINED ARC OVER FRONT (LB)				LOAD RADIUS (FT)	MAX NO LOAD BOOM ANGLE (DEG)
		SUPERELEVATION				CREEP (SUPERELEVATION)					
		0 MPH	< 2 IN	2 < 4 IN	4 < 6 IN	0 MPH	< 2 IN	2 < 4 IN	4 < 6 IN		
10	30.5	18,000				39,750				10	61
12	30.5	16,100				35,250	28,200			12	56
15	30.5	13,500	10,800	9,000	7,200	30,000	24,000	20,000	16,000	15	49
20	35	9,150	7,320	6,100	4,880	22,500	18,000	15,000	12,000	20	44
25	37	5,250	4,200	3,500	2,800	17,400	13,920	11,600	9,280	25	36
30	40	4,300	3,456	2,880	2,304	13,425	10,740	8,950	7,160	30	29
35	45	3,500	2,805	2,338	1,870	10,500	8,400	7,000	5,600	35	27
40	50	2,700	2,220	1,850	1,480	8,475	6,780	5,650	4,520	40	26
45	53	2,000	1,620	1,350	1,080	7,050	5,640	4,700	3,760	45	19
48	53	1,700	1,356	1,130	904	6,450	5,160	4,300	3,440	48	0



ON OUTRIGGERS



ON TIRES



ON RAIL

BOLD LINES DETERMINE THE LIMITING POSITION OF ANY LOAD FOR OPERATION WITHIN WORKING AREA INDICATED

PARTS OF LINE	1	2	3	4	5	6
MAX. HOOK LOAD	10,000	20,000	30,000	40,000	50,000	60,000

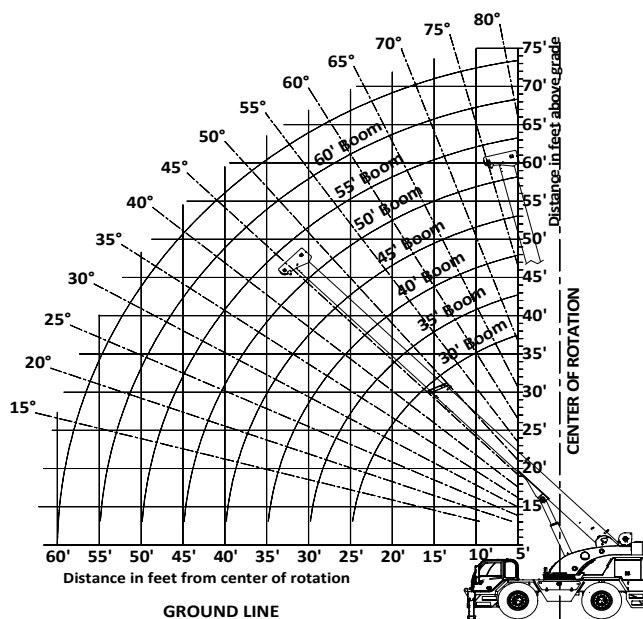
- All operators and support personnel shall read and fully understand manufacturer furnished operator's manual, latest applicable American National Standards Institute (ANSI) Safety Standards for Cranes, and any applicable federal, state, or local safety regulations before operating machine. Crane and load ratings comply with ANSI and Power Crane & Shovel Association (PCSA) Standards.
- All "ON OUTRIGGER" lifts shall be made with outrigger arms fully extended to fully support and level machine (tires off supporting surface). Additional structural blocking or cribbing may be required for some applications.
- All ratings where reversed text appears are based on 85% of tipping load "ON OUTRIGGERS" and 75% of tipping "ON TIRES" with machine stable on firm level ground. Ratings where text is **not** reversed are based on structural competence. Boom angles are undeflected boom angles.
- DO NOT EXCEED crane load ratings. When load radius or boom angle are between listed values, use the smaller load rating. DO NOT ATTEMPT TO TIP MACHINE TO DETERMINE ALLOWABLE LOADS.
- Weights of hook blocks, bucket, slings, and all other load handling devices are not accounted for in the load chart. The load handling devices must be considered as part of the load.
- Reduce ratings appropriately for wind conditions, speed of operation, soft or uneven supporting surfaces, etc.



CAUTION

IN WIND OVER 30 MPH, CEASE OPERATION;  
POSITION BOOM AWAY FROM WIND AND LOWER  
BOOM BELOW 60°.

IN WIND OVER 50 MPH,  
FULLY RETRACT AND LOWER BOOM  
TO LOWEST POSSIBLE POSITION.



- Load ratings apply to this machine only as originally manufactured and equipped. Unauthorized modification or optional equipment may reduce load capacity. Please consult Badger Equipment BEFORE modification or use of optional equipment not covered in this chart.
- DO NOT lift over operator cab.
- These load ratings are for lift service only.



WARNING

- Pick and carry load ratings are shown in load chart for on tires, on rail and on rail with superelevation. Boom must be above 0°.
- Load shall be restrained from swinging and shall be positioned as close to the ground as possible over the front along the carrier's lengthwise centerline. DO NOT exceed 2.5 MPH (4 Km/h) travel speed using smooth starts and stops. Other crane operations SHALL NOT be permitted when transporting a load. Creep is traveling no more than 200 Ft. in a half hour.
- Boom angles are with no load.
- Recommended tire sizes and inflation pressures are:

30 & 25 Ton Capacity  
16.00-25 - 32 Ply  
Static - 125 PSI  
Creep - 125 PSI  
Travel - 95 PSI

OPTIONAL - Foam Filled Tires

RECOMMENDATIONS:  
5/8" - 6 x 19 Class - 6 x 25 FW, PRF, RRL, XIP, IWRC Wire Rope