

CD4420R LOAD CHART

Badger Equipment Co.
217 Patneade Dr.
Winona, Minnesota 55987
Ph. 507-454-1563

LIFTING CAPACITIES - POUNDS
2 SECTION (30.5'-53' BOOM)

ON OUTRIGGERS

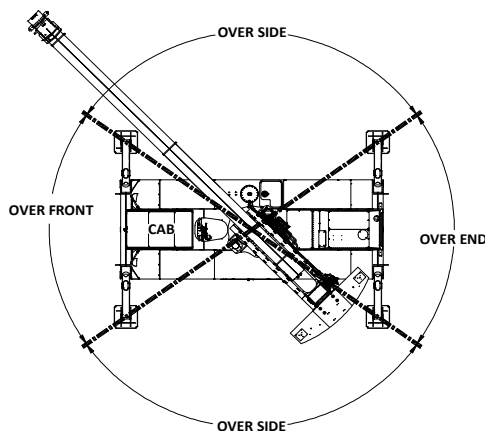
LOAD RADIUS (FT)	BOOM LENGTH (FT)																		LOAD RADIUS (FT)
	31			35			40			45			50			53			
BOOM ANGLE (DEG)	OVER FRONT (LB)	360° (LB)	BOOM ANGLE (DEG)	OVER FRONT (LB)	360° (LB)	BOOM ANGLE (DEG)	OVER FRONT (LB)	360° (LB)	BOOM ANGLE (DEG)	OVER FRONT (LB)	360° (LB)	BOOM ANGLE (DEG)	OVER FRONT (LB)	360° (LB)	BOOM ANGLE (DEG)	OVER FRONT (LB)	360° (LB)	LOAD RADIUS (FT)	
10	61	40,000	40,000	65	40,000	40,000	68	40,000	40,000	71	40,000	40,000						10	
12	57	33,300	33,300	61	33,300	33,300	65	33,300	33,300	68	33,300	33,300	70	33,300	33,300	71	33,300	33,300	12
15	50	26,600	26,600	55	26,600	26,600	60	26,600	26,600	64	26,600	26,600	66	26,600	26,600	68	26,600	26,600	15
20	36	20,000	20,000	44	20,000	20,000	51	20,000	20,000	56	20,000	20,000	60	20,000	20,000	62	20,000	20,000	20
25	15	16,000	16,000	31	16,000	16,000	41	16,000	16,000	48	16,000	16,000	53	16,000	16,000	56	16,000	16,000	25
30				0	13,300	13,300	29	13,300	13,300	39	13,300	13,300	46	13,300	13,300	49	13,300	13,300	30
35							0	11,400	11,400	27	11,400	11,000	37	11,400	11,000	41	11,400	11,000	35
40										0	10,000	8,500	26	10,000	8,500	32	10,000	8,500	40
45													0	8,800	7,800	19	8,800	7,800	45
48																0	8,300	6,700	48

ON TIRES

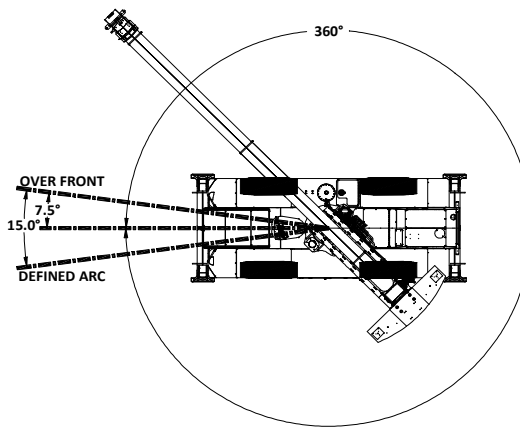
LOAD RADIUS (FT)	MAX BOOM LENGTH (FT)	STATIONARY		PICK & CARRY		LOAD RADIUS (FT)
		360° (LB)	OVER FRONT DEFINED ARC (LB)	CREEP	2.5 MPH	
				STR OVER FRONT (LB)		
10	30.5	18,000	26,000	18,400	14,600	10
12	30.5	13,700	22,900	16,200	12,800	12
15	40	10,100	19,500	13,800	10,900	15
20	40	7,000	15,000	11,000	8,700	20
25	45	5,000	11,000	9,000	7,300	25
30	45	3,000	7,000	7,000	6,000	30
35	45	2,000	6,000	6,000	5,000	35
40	53	1,500	5,000	5,000	4,000	40
45	53		3,500	3,500	3,500	45
48	53		3,000	3,000	3,000	48

ON RAIL

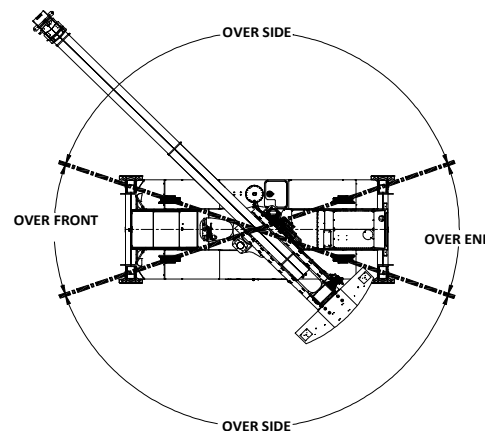
LOAD RADIUS (FT)	MAX BOOM LENGTH (FT)	360° STATIONARY (LB)				15 DEG DEFINED ARC OVER FRONT (LB)				LOAD RADIUS (FT)	MAX NO LOAD BOOM ANGLE (DEG)
		SUPERELEVATION				CREEP (SUPERELEVATION)					
		0 MPH	< 2 IN	2 < 4 IN	4 < 6 IN	0 MPH	< 2 IN	2 < 4 IN	4 < 6 IN		
10	30.5	18,000				39,750				10	61
12	30.5	16,100				33,300	28,200			12	56
15	30.5	13,500	10,800	9,000	7,200	26,600	24,000	20,000	16,000	15	49
20	35	9,150	7,320	6,100	4,880	20,000	18,000	15,000	12,000	20	44
25	37	5,250	4,200	3,500	2,800	16,000	13,920	11,600	9,280	25	36
30	40	4,300	3,456	2,880	2,304	13,300	10,740	8,950	7,160	30	29
35	45	3,500	2,805	2,338	1,870	10,500	8,400	7,000	5,600	35	27
40	50	2,700	2,220	1,850	1,480	8,475	6,780	5,650	4,520	40	26
45	53	2,000	1,620	1,350	1,080	7,050	5,640	4,700	3,760	45	19
48	53	1,700	1,356	1,130	904	6,450	5,160	4,300	3,440	48	0



ON OUTRIGGERS



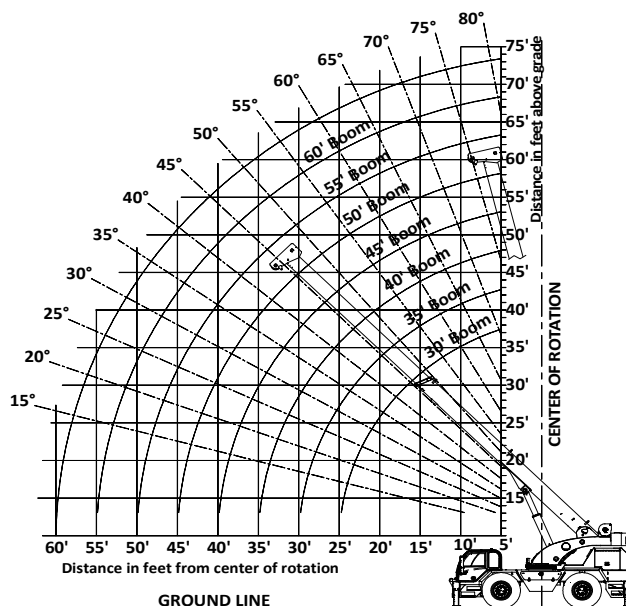
ON TIRES



ON RAIL

BOLD LINES DETERMINE THE LIMITING POSITIONS OF ANY LOAD FOR OPERATION WITHIN WORKING AREA INDICATED

PARTS OF LINE	1	2	3	4	5
MAX. HOOK LOAD	10,000	20,000	30,000	40,000	50,000



7. Load ratings apply to this machine only as originally manufactured and equipped. Unauthorized modification or optional equipment may reduce load capacity. Please consult Badger Equipment BEFORE modification or use of optional equipment not covered in this chart.

8. DO NOT lift over operator cab.
9. These load ratings are for lift service only.

WARNING

10. Pick and carry load ratings are shown in load chart for on tires, on rail and on rail with superelevation. Boom must be above 0°.

11. Load shall be restrained from swinging and shall be positioned as close to the ground as possible over the front along the carrier's lengthwise centerline. DO NOT exceed 2.5 MPH (4 Km/h) travel speed using smooth starts and stops. Other crane operations SHALL NOT be permitted when transporting a load. Creep is traveling no more than 200 Ft. in a half hour.

12. Recommended tire sizes and inflation pressures are

20 Ton Capacity
16.00-25 - 32 Ply
Static - 125 PSI
Creep - 125 PSI
Travel - 95 PSI

OPTIONAL - Foam Filled Tires

RECOMMENDATIONS:
5/8" - 6 x 19 Class - 6 x 25 FW, PRF, RRL, XIP, IWRC Wire Rope

CAUTION

IN WIND OVER 30 MPH, CEASE OPERATION;
POSITION BOOM AWAY FROM WIND AND LOWER
BOOM BELOW 60°.

IN WIND OVER 50 MPH,
FULLY RETRACT AND LOWER BOOM
TO LOWEST POSSIBLE POSITION.