

1085R Cruz-Air

SPECIAL FEATURES

Custom Built in America. For Today. For the Future.

ADVANCED HYDRAULICS

Dual flow hydraulics with one variable and two fixed displacement pumps provide high efficiency, fuel economy and excellent digging performance.

STOPPING POWER

Fast, dependable, hydraulic-powered disc brakes on each wheel gives the Cruz-Air the power to stop when needed. Park safely with the spring-applied, hydraulically released parking brake located on the rear drive shaft. The working brake is automatically applied during dig function and automatically releases when the creep function is activated by the push of a button.

MORE BUCKET AND STICK DIGGING POWER

The Cruz-Air has outstanding performance for this class of wheeled excavator. Maximum bucket breakout force is rated at 23,298 lbf. The stick breakout force is rated at 15,596 lbf and can get over 30' surface reach and nearly 19' digging depth with a 22' loading height. Easy to work under and around obstacles with Extenda-stick®, without blocking more than one lane of traffic.

IMPROVE YOUR BOTTOM LINE

Highest travel speed and gradeability of any wheeled excavator. Quick 29 mph travel speed gets you to the job faster. Eliminates the need and expense to lowboy it from one worksite to another. Less travel time to the job, more productivity on the job and more profit to your bottom line.

The 95% gradeability gives you 50% more off-road tractive effort that other wheeled excavators can't match. Four 17.5" x 25" tires, 16" high ground clearance, longer wheelbase and full-time 4-wheel drive with torque proportioning differentials enable you to get unmatched rough terrain performance in all types of adverse ground conditions. For more traction, optional automatic limited slip or driver-controlled locking differentials are available. Do more jobs faster with confidence.

FAST, EASY SERVICEABILITY

All daily maintenance points are accessible from ground level. Vandal resistance covers provide easy access to engine components and filters for fast inspection and replacement. Outboard planetaries also simplify servicing. Available central lube system further protects your investment.

EXCEPTIONAL OPERATOR COMFORT

The big, deluxe operator's cab gives a "platinum" level of comfort for all-day operation. Spacious and ergonomically designed, the easy-access cab features a plush, fully adjustable suspension seat with armrests. Totally integrated pilot-operated joysticks, with low operating forces and short stroke control bucket, swing, boom and stick functions. A tilt, telescoping steering column has automotive style controls for increased operator convenience. New cluster instruments and gauges continually monitor machine operation status. Panoramic windows give excellent visibility while loading and working in tight conditions. The new sound suppression provides a quiet environment that promotes more productivity. The optional hydraulic heater and air conditioner maintains a comfortable climate control at the flip of a switch. Floor and wall carpeting create a pleasing work platform.

POSITIVE CONTROLS OF SWING MECHANISM

A high torque gear motor powers the swing mechanism with 24,884 lb./ft. torque, providing 360° continuous swing with an automatic swing brake for positive drift control.

OPTIONS MAKE A GREAT MACHINE EVEN BETTER

Customizations can make your 1085R the most versatile machine on your fleet. Options include railroad grapples, rail tongs, rail threaders, dozer blade, special railroad paint schemes, hydraulic thumb, mowers, six buckets and more.

THE POWER TO PERFORM

The 4-cylinder, 160 HP, Tier 3 Cummins turbo-charged diesel engine provides the right power to weight ratio for long life and exceptional reliability, plus automatic engine deceleration and three power mode settings. Powerful 160 net horsepower (119kw) and 460 lb./ft maximum torque (624Nm) gives the power needed to deliver the performance you want when you need it.

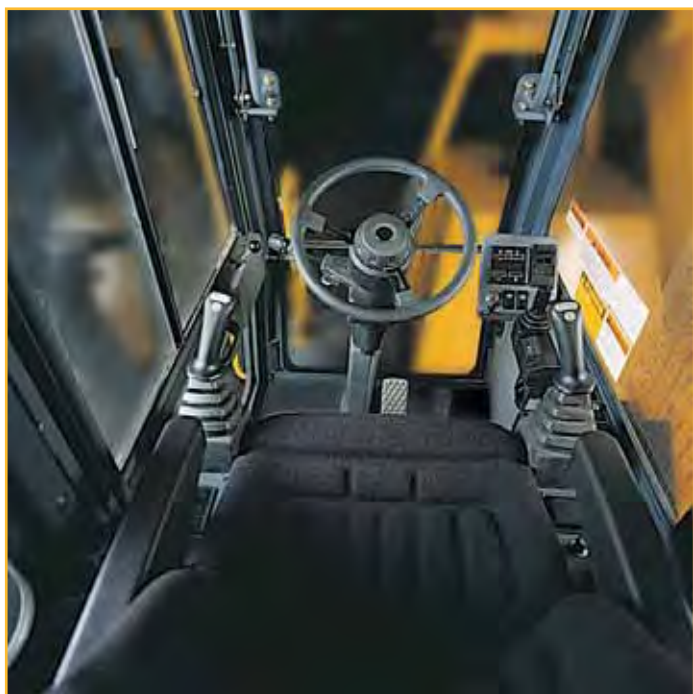
Matched with a 6-speed Clark electric powershift transmission and converter, the Cruz-Air has the power and speed ranges to smoothly perform all kinds of excavator and lifting tasks with ease and keeps your operating costs down.

STABILITY AND FLEXIBILITY

You get both with Cruz-Air outriggers. Equipped with two front and rear standard outriggers, each is individually controlled from the cab with a quick five-second lowering and raising time. No need to add the cost of blades for stability — it's built in! Optional wide-stance outriggers are also available for material handling applications. The Cruz-Air also includes front axle oscillation lock.

INCREDIBLE VERSATILITY

This is no single-purpose machine. The exclusive Extenda-stick® hydraulic telescoping stick adds 5' for deeper digging. The stick also allows you to work closer to the machine with the Extenda-stick® retracted. The Wrist-O-Twist® gives the operator the ability to sculpt 45° in each direction from the center for increased digging and grading. The exclusive quick-latch attachment, that is standard on the Wrist-O-Twist®, makes quick work of installing or removing attachments to use on different jobs. No pins to remove, no tools required and the attachments can be changed in a matter of minutes; another great time saver exclusive to the Cruz-Air. Auxiliary hydraulics enable you to quickly install grapples, rippers, mowers, brush cutters and augers. This versatility is available only on the Cruz-Air. It will save you time and money. You get more from the Cruz-Air because of all the attachments, buckets and stick options that are available to extend the work and range of this versatile excavator.



SPACIOUS ERGONOMIC DELUXE OPERATOR CAB.



Custom Built in America. For Today. For the Future.



217 Patneude Drive
Winona, Minnesota 55987
Phone: (507) 454-1563
Fax: (507) 453-6441
www.badgerequipment.com

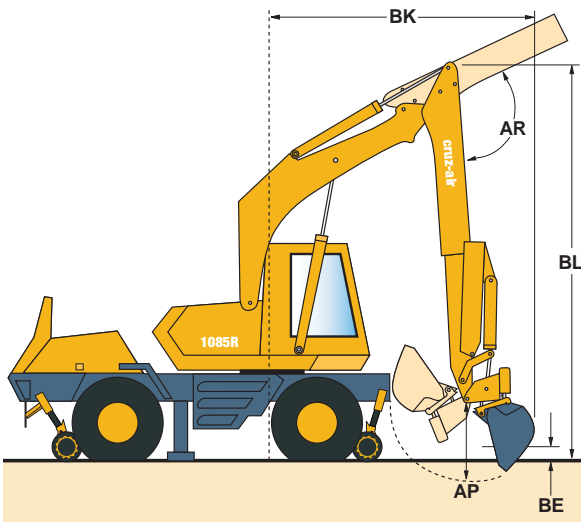
All specifications are subject to change.

1085R Cruz-Air

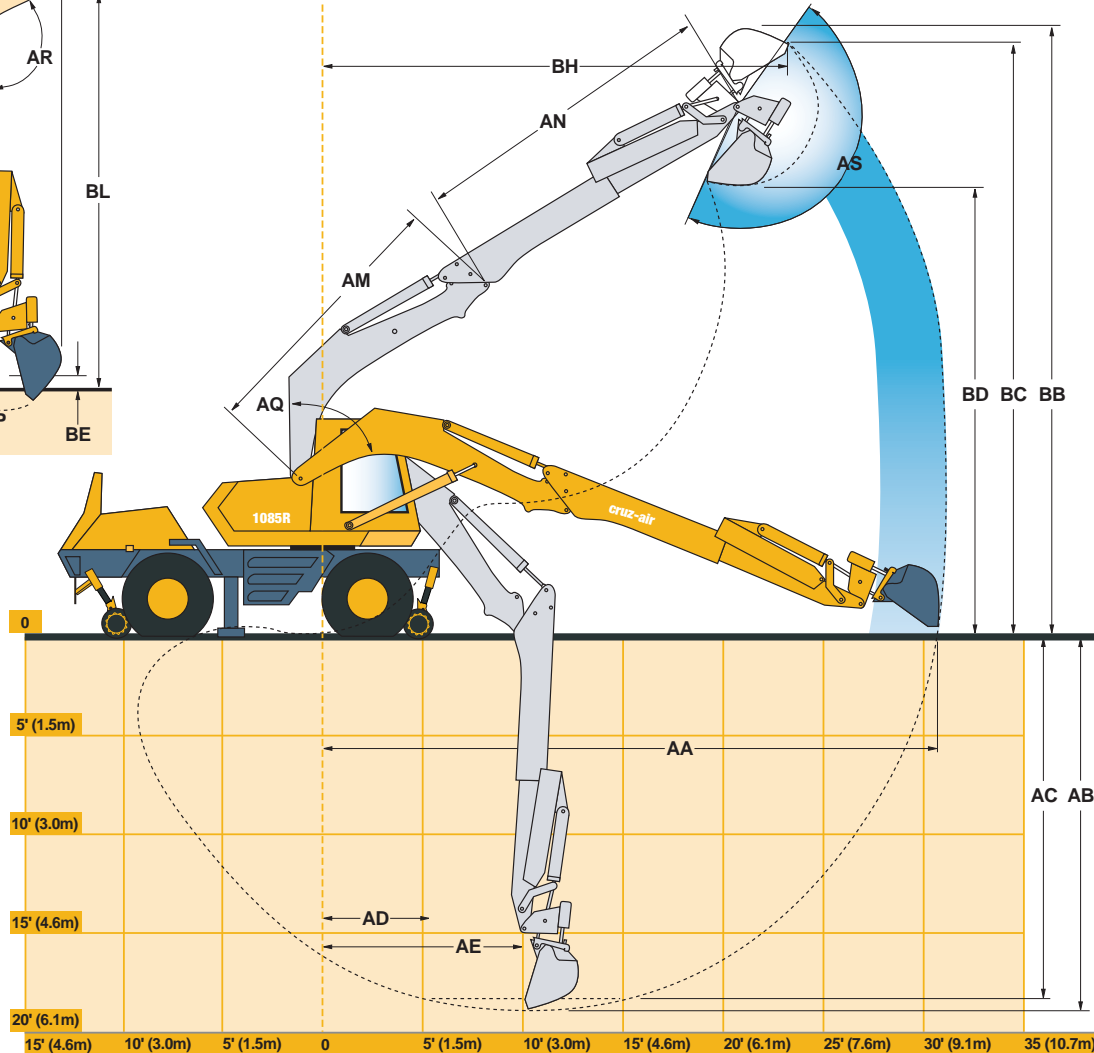
WORKING RANGE

Custom Built in America. For Today. For the Future.

Boom/Bucket Configuration	Boom Type	Rigid			Extenda-stick®			
	Bucket Type	Excavator			Excavator		Ditch & Wrist-O-Twist®	
	Boom Length	Fixed	Extended	Retracted	Extended	Retracted	Extended	Retracted
AA	Maximum reach at grade level	30'6" (9.30m)	30'7" (9.32m)	25'6" (7.77m)	30'8" (9.35m)	25'7" (7.80m)		
AB	Maximum digging depth (tip of teeth)	18'10" (5.74m)	18'10" (5.74m)	13'10" (4.22m)	18'11" (5.77m)	13'11" (4.24m)		
AC	Maximum depth of cut for 8" (2.44m) of level bottom	18'5" (5.61m)	18'5" (5.61m)	13'3" (4.04m)	18'6" (5.64m)	13'4" (4.06m)		
AD	Minimum radius of 8" (2.44m) level bottom at depth AC	6'2" (1.88m)	6'2" (1.88m)	6'2" (1.88m)	6'2" (1.88m)	6'2" (1.88m)		
AE	Radius of maximum digging depth	10'2" (3.10m)	10'2" (3.10m)	10'2" (3.10m)	10'2" (3.10m)	10'2" (3.10m)		
AM	Boom length (boom pivot to dipper pivot)	13'8" (4.17m)	13'8" (4.17m)	13'8" (4.17m)	13'8" (4.17m)	13'8" (4.17m)		
AN	Dipper length (dipper pivot to bucket pivot)	15'0" (4.57m)	15'0" (4.57m)	10'1" (3.07m)	15'0" (4.57m)	10'1" (3.07m)		
AP	Bucket tooth radius (bucket pivot to tip of teeth)	4'1" (1.24m)	4'1" (1.24m)	4'1" (1.24m)	4'2" (1.27m)	4'2" (1.27m)		
AR	Dipper pivot angle	116°	117°	117°	117°	117°		
AS	Bucket pivot angle	171°	169°	169°	169°	169°		
BB	Maximum height of working equipment	29'9" (9.07m)	29'10" (9.09m)	27'4" (8.33m)	30'6" (9.30m)	28'0" (8.53m)		
BC	Maximum bucket teeth height	29'5" (8.97m)	29'5" (8.97m)	26'9" (8.15m)	29'10" (9.09m)	27'4" (8.33m)		
BD	Minimum clearance of fully curled bucket at maximum boom height	22'3" (6.78m)	22'4" (6.81m)	19'10" (6.05m)	22'4" (6.81m)	19'10" (6.05m)		
BE	Minimum clearance of fully curled bucket to maximum boom height	1'11" (.58m)	1'11" (.58m)	6'11" (2.11m)	0'9" (.23m)	5'9" (1.75m)		
BH	Radius of bucket teeth at maximum height	23'7" (7.19m)	23'9" (7.24m)	19'5" (5.92m)	23'4" (7.11m)	19'0" (5.79m)		
BK	Maximum working equipment radius, boom at maximum height, dipper fully retracted	13'6" (4.11m)	13'6" (4.11m)	13'3" (4.04m)	13'11" (4.24m)	13'7" (4.14m)		
BL	Maximum height of working equipment w/dipper fully retracted	20'5" (6.22m)	20'5" (6.22m)	20'5" (6.22m)	20'5" (6.22m)	20'5" (6.22m)		
BQ	Boom pivot angle	81°	81°	81°	81°	81°		



These illustrations show Extenda-stick® dipper with Wrist-O-Twist® and ditching bucket. However, the Working Range table also includes other configurations.



Custom Built in America. For Today. For the Future.



217 Patneau Drive
Winona, Minnesota 55987
Phone: (507) 454-1563
Fax: (507) 453-6441
www.badgerequipment.com

1085R Cruz-Air

WORK LOAD

Custom Built in America. For Today. For the Future.

Lift Capacities U.S. (Metric)

NOTES: an * indicates a capacity that is limited by stability. Values are based on a standard excavator with 30" (0.76 m) excavating bucket, 9068 lb. (4113 kg) counterweight for Rigid Stick and 11964 lb. (5427 kg) counterweight for Extenda-Stick® with rear outriggers in use on a firm, level surface. Rated loads do not exceed 87% of hydraulic capacity nor 75% of stability. All specifications comply with SAE J1097.

▽ DISTANCE FROM CENTERLINE OF ROTATIONS								
FOR RIGID STICK ▽ Lift Height	10' (3.05 m)		15' (4.57 m)		20' (6.10 m)		25' (7.62 m)	
	Over End	Over Side	Over End	Over Side	Over End	Over Side	Over End	Over Side
+20' (6.10 m)							5,958 lb. (2,703 kg)	4,761 lb.* (2,160 kg)
+15' (4.57 m)							6,539 lb. (2,966 kg)	4,732 lb.* (2,146 kg)
+10' (3.05 m)							6,843 lb. (3,104 kg)	4,575 lb.* (2,075 kg)
+05' (1.52 m)					8,546 lb. (3,876 kg)	6,605 lb.* (2,996 kg)	7,204 lb. (3,268 kg)	4,372 lb.* (1,983 kg)
Groundline	18,388 lb. (8,341 kg)	18,388 lb. (8,341 kg)	12,323 lb. (5,590 kg)	10,092 lb.* (4,578 kg)	9,304 lb. (4,220 kg)	6,213 lb.* (2,848 kg)	7,254 lb. (3,290 kg)	4,195 lb.* (1,903 kg)
-05' (1.52 m)	17,919 lb. (8,128 kg)	17,919 lb. (8,128 kg)	12,886 lb. (5,845 kg)	9,560 lb.* (4,336 kg)	9,268 lb. (4,204 kg)	5,960 lb.* (2,703 kg)	5,931 lb. (2,690 kg)	4,148 lb.* (1,881 kg)
-10' (3.05 m)	17,418 lb. (7,901 kg)	17,418 lb. (7,901 kg)	11,427 lb. (5,183 kg)	9,395 lb.* (4,261 kg)	7,217 lb. (3,274 kg)	5,945 lb.* (2,697 kg)		
-15' (4.57 m)	1,209 lb. (4,631 kg)	10,209 lb. (4,631 kg)	11,427 lb. (2,375 kg)	5,237 lb. (2,375 kg)				

▽ DISTANCE FROM CENTERLINE OF ROTATIONS								
FOR EXTENDA-STICK® - EXTENDED ▽ Lift Height	10' (3.05 m)		15' (4.57 m)		20' (6.10 m)		25' (7.62 m)	
	Over End	Over Side	Over End	Over Side	Over End	Over Side	Over End	Over Side
+20' (6.10 m)							5,584 lb. (2,533 kg)	4,348 lb.* (1,972 kg)
+15' (4.57 m)							5,969 lb. (2,707 kg)	4,305 lb.* (1,953 kg)
+10' (3.05 m)							6,241 lb. (2,831 kg)	4,114 lb.* (1,866 kg)
+05' (1.52 m)					7,884 lb. (3,576 kg)	6,094 lb.* (2,764 kg)	6,567 lb. (2,979 kg)	3,874 lb.* (1,757 kg)
Groundline	17,400 lb. (7,893 kg)	17,400 lb. (7,893 kg)	11,516 lb. (5,224 kg)	9,420 lb.* (4,273 kg)	8,584 lb. (3,894 kg)	5,636 lb.* (2,556 kg)	6,590 lb. (2,989 kg)	3,671 lb.* (1,665 kg)
-05' (1.52 m)	18,426 lb. (8,358 kg)	18,298 lb. (8,300 kg)	12,015 lb. (5,450 kg)	8,811 lb.* (3,997 kg)	8,516 lb. (3,863 kg)	5,349 lb.* (2,426 kg)	5,267 lb. (2,389 kg)	3,632 lb.* (1,647 kg)
-10' (3.05 m)	16,308 lb. (7,397 kg)	16,308 lb. (7,397 kg)	10,548 lb. (4,784 kg)	8,644 lb.* (3,921 kg)	6,471 lb. (2,935 kg)	5,355 lb.* (2,429 kg)		
-15' (4.57 m)	9,161 lb. (4,155 kg)	9,161 lb. (4,155 kg)	4,408 lb. (1,999 kg)	4,408 lb. (1,999 kg)				

▽ DISTANCE FROM CENTERLINE OF ROTATIONS								
FOR EXTENDA-STICK® - RETRACTED ▽ Lift Height	10' (3.05 m)		15' (4.57 m)		20' (6.10 m)		25' (7.62 m)	
	Over End	Over Side	Over End	Over Side	Over End	Over Side	Over End	Over Side
+20' (6.10 m)					8,078 lb. (3,664 kg)	6,483 lb.* (2,941 kg)		
+15' (4.57 m)					8,050 lb. (3,651 kg)	6,415 lb.* (2,910 kg)		
+10' (3.05 m)					8,450 lb. (3,833 kg)	6,079 lb.* (2,757 kg)		
+05' (1.52 m)	17,410 lb. (7,897 kg)	17,410 lb. (7,897 kg)	11,674 lb. (5,295 kg)	9,495 lb.* (4,307 kg)	8,812 lb. (3,997 kg)	5,705 lb.* (2,588 kg)		
Groundline	18,379 lb. (8,337 kg)	18,219 lb.* (8,264 kg)	12,067 lb. (5,473 kg)	8,876 lb.* (4,027 kg)	8,480 lb. (3,837 kg)	5,469 lb.* (2,481 kg)		
-05' (1.52 m)	16,202 lb. (7,349 kg)	16,202 lb. (7,349 kg)	10,549 lb. (4,785 kg)	8,719 lb.* (3,955 kg)				
-10' (3.05 m)	9,157 lb. (4,154 kg)	9,157 lb. (4,154 kg)						



Custom Built in America. For Today. For the Future.

217 Patneau Drive
Winona, Minnesota 55987
Phone: (507) 454-4563
Fax: (507) 453-5441

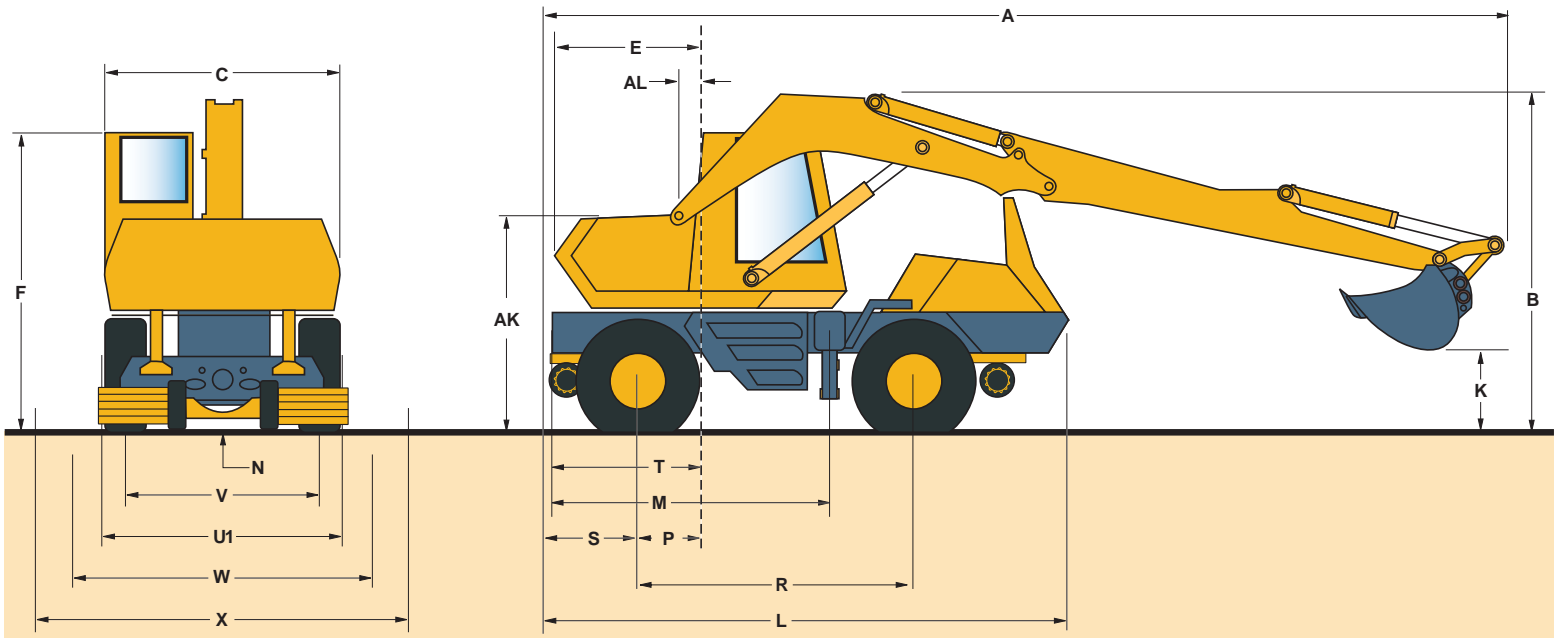
www.badgerequipment.com



All specifications are subject to change.

1085R Cruz-Air TRANSPORTATION DIMENSIONS

Custom Built in America. For Today. For the Future.



Description	U.S.	Metric
A Overall length, transport position: Rigid dipper, excavating bucket	34'9"	(10.59m)
Extenda-stick®, excavating bucket	29'11"	(9.12m)
Extenda-stick®, ditch bucket, Wrist-O-Twist®	30'5"	(9.27m)
AK Boom pivot to groundline	8'2"	(2.49m)
AL Boom pivot to axis of rotation	12.6"	(320mm)
B *Overall height, transport position	12'8"	(3.86m)
C Width of upperstructure	8'1"	(2.46m)
E Swing clearance, axis of rotation to rear corner of upperstructure	8'8"	(4.09m)
F Height to top of cab	11'2"	(3.40m)
K Clearance, attachment in transport position: Rigid dipper, excavating bucket	3'1"	(940mm)
Extenda-stick®, excavating bucket	3'7"	(1.09m)
Extenda-stick®, ditch bucket, Wrist-O-Twist®	4'4"	(1.32m)
L Overall length of undercarriage	23'	(10.87m)
M Outrigger frames, center to center	13'7"	(6.22m)

Description	U.S.	Metric
N Ground Clearance (bottom of rail wheel)	11"	(.433m)
P Rear axle to axis of rotation	2'6"	(762mm)
R Wheelbase	10'1"	(3.07m)
S Rear axle to rear of frame	6'9"	(3.19m)
T Axis of rotation to rear outriggers	8'8"	(4.09m)
U1 Max. overall width, outriggers retracted	8'6"	(2.59m)
V Tread width with 17.5 tires	7'4"	(3.46m)
W Effective spread of extended outriggers	10'7"	(3.23m)
X Maximum width over pads, outriggers extended	13'2"	(4.01m)

Weight of Machine: 35,000 lbs., 25.17 metric tons

TRAVEL SPEEDS: Standard excavator, 17.5 x 25 tires - mph (km/h)				
	GEAR	1	2	3
High Range		6.7 mph	12.7 mph	29.1 mph
		10.8 kph	20.4 kph	46.8 kph
Low Range		3.1 mph	5.9 mph	15.8 mph
		5.0 kph	9.5 kph	25.4 kph

* For lowboy hauling, swing the boom around and the overall height is 11' 8"

**YOU CAN
CUSTOMIZE.**



All specifications are subject to change.

Drawbar Pull: Standard excavator - lbf (kN)				
	GEAR	1	2	3
High Range	lbf	12,016	5,705	1,477
	kN	53.4	25.4	6.6
Low Range	lbf	27,856	13,805	4,339
	kN	123.9	61.4	19.3



Custom Built in America. For Today. For the Future.



217 Patneau Drive
Winona, Minnesota 55987
Phone: (507) 454-1563
Fax: (507) 453-6441
www.badgerequipment.com

1085R Cruz-Air

Custom Built in America. For Today. For the Future.

SPECIFICATIONS

Axles: Torque proportioning (high traction) differential.

Front: Planetary, steering, axle oscillates and is equipped with oscillation lockouts.

Rear: Planetary, steering axle with parking brake.

Tire Size

Standard 17.5 - 25, 16PR; Optional 17.5 - 25, 20PR, Super Ground Grip; Optional 17.5 R 25, Michelin XHAT*

Travel Speeds (Forward and reverse)

Unit equipped with 17.5 - 25 tires.

Gear Ratios	High	Low
1st mph	6.7	3.1
(km/h)	(10.8)	(5.0)
2nd mph	12.7	5.9
(km/h)	(20.4)	(9.5)
3rd mph	29.1	15.8
(km/h)	(46.8)	(25.4)

Drawbar Pull

Gear Ratios	High	Low
1st lbf	12,016	27,856
(kN)	(53.4)	(123.9)
2nd lbf	5,705	13,805
(kN)	(25.4)	(61.4)
3rd lbf	1,477	4,339
(kN)	(6.6)	(19.3)

3% grade speed (max) 12.4 mph (20.0 km/h)

Brakes:

Service: Hydraulic dry disc on each wheel, foot operated;

Parking: Spring applied, hydraulic released. Located on rear driveshaft

Working: Hydraulic at each wheel. Hand operated.

Maximum Gradeability (Paved Surface)

With no load and 17.5 - 25 tires 95%

Note: Gradeability is a measure of tractive effort only and does not represent grades on which the machine can operate.

Turning Radius

Inside curb — 15'7" (4.75 m)

Outside — 25'6" (7.77m)

Service Capacities

Fuel tank: 75gal (284 Liters)

Hydraulic system (complete) 75gal (284 Liters)

Hydraulic reservoir 35gal (132 Liters)

Cooling system 9gal (34 Liters)

Engine oil (with filter) 17 qts. (16.1 Liters)

Swing gearbox 8.5 qts. (8 Liters)

Transmission 21qts. (19.9 Liters)

And torque converter

Operating Weights

Standard excavator with rigid dipper, 17.5 - 25, 16 PR tires,

std. cab with heater, rear (std.) outriggers, 60" (1.5 m);

Ditching bucket, Wrist-O-Twist*, full fuel. 175 lb. (79kg)

operator: 42,980 lb. (19,470 kg); Standard excavator with

Extenda-Stick*, 17.5 - 25, 16 PR tires, std. cab with heater,

front and rear (opt.) outriggers, 36" backhoe bucket, full fuel,

175 lb (70 kg) operator: 42,260 lbs. (20,050 kg)

Standard Equipment

Enclosed, total vision, vandal-resistant cab. Tinted windows.

Adjustable bucket seat. Cab controls for all operations. Signal

horn. Windshield wipers. 13'8" (4.2 m) grading and excavation

boom. Fast hoist, crowd and tool. Swing brake. Positive oil

cooler. Hydraulic oil filters. Hydraulic rear outriggers. Hydraulic

service and working brakes. Parking brake - spring applied,

hydraulic-released, on drive shaft. Turn signals. Head and tail-

lights. Four-wheel drive. Planetary axles. Front-2 wheel steering,

4 wheel steering, and crab steering. 17.5 - 25, 16 PR tires.

Power shift transmission, forward and reverse. Torque converter.

Torque proportioning differentials. Electric engine hour meter.

Fuel gauge. Dry-type air cleaner. Cold weather start kit. Remote

boom and swing lubrication. Master battery disconnect switch.

Back-up alarm.

Optional Equipment

15' (4.6 m) rigid dipper. 15' (4.6 m) Extenda-Stick* dipper,

17.5 - 25, 20 PR super ground grip tires. 17.5 R 25 XHAT*

(Michelin) tires. Hydraulic front outriggers. Secondary steering.

Upper vandal cover. Cab heater; LP gas. Excavator boom work

light package. Tool box. Windshield washer. Pintle hitch.

Wrist-O-Twist* with quick latch. Various buckets (See list.)

Lift lugs. Auxiliary hydraulic controls.

Buckets

Nominal	Bucket	SAE Capacity
Width	Weight	(struck)
In. (mm)	Lb. (kg)	yd3 (m3)

General Purpose:

24" (610 mm) 925 lb (420 kg) 0.37 yd3 (0.28 m3)

30" (762 mm) 1,030 lb (467 kg) 0.50 yd3 (0.38 m3)

36" (914 mm) 1,130 lb (513 kg) 0.62 yd3 (0.47 m3)

42" (1,067mm) 1,235 lb (560 kg) 0.74 yd3 (0.57 m3)

Ditch Forming:

60" (1,524mm) 1,005 lb (456 kg) 0.63 yd3 (0.48 m3)

72" (1,829mm) 1,075 lb (488 kg) 0.75 yd3 (0.57 m3)

Front Loading:

60" (1,524mm) 1,626 lb (738 kg) 1.5 yd3 (1.15 m3)

Concrete Removal:

48" (1,219 mm) 1,850 lb (839 kg) NA

Note: For heaped capacities, add approx. 20%

Operator's Cab

All controls for both the lower and upper works are located in

a single, all-steel, weatherproof cab. Windshield of tinted, tem-

pered glass slides open and is stored in an up-and-over position.

Side and rear windows are of tinted Lexan. Separate hand

controls for digging and parking brakes, swing brake, ignition,

directional lights, engine throttle and lock, and steering reversal

are all standard controls in the cab. (Operator controls can be

interchanged to satisfy techniques of most operators).

Engine

Make and model: Cummins QSB4.5-Tier3, turbocharged;

Number of cylinder: 4; Bore and stroke: 4.21 x 4.88"

(107 x 124mm); Displacement: 275 in3 (4506cm3);

Fuel supply: High pressure; Air Cleaner: Dual stage, dry-type;

Oil filter: Renewable cartridge; Lubrication: Positive pressure;

Cooling system: Pressurized radiator and lubricated bearing

impeller pump; Horsepower; SAE Gross: 160 (119 kW) @

2200 rpm.

Torque, max. (SAE): 460lb -ft (624Nm) @ 1500rpm

Electrical

Starting: 12-volt electric; Batteries (2) 700CCA @ 00F (-180C)

at 30sec; Alternator: 130 amp

Hydraulic System

Pumps: One fixed displacement gear pump for the crowd circuits

@ 52 gpm (197L/min). A tandem fixed displacement gear pump

section for the hoist circuits @ 52 gpm (197L/min.) and one

variable displacement pump section for the steering, brakes

and pilot circuits @ 0 to 26 gpm (98 L/min.) Main relief valve

pressure setting: 2650 psi (18,271 kpa)

Oil Cooler: Positive radiator type hydraulic oil cooler

Control Valves: Quantity: 2; Type: Sectional - 2 spool;

Functions controlled: Hoist, crowd, tool, swing and 2 auxiliary.

Cylinders: Double-acting hydraulic for hoist, crowd, outriggers,

steering and optional equipment.

Hoist: 6.5 x 55.4" (165mm x 1.41 m)

Dipper, backhoe 6.5x50.8" (165mm x 1.29m)

Tool: 5.5 x 37.5" (140 x 953 mm)

Outriggers (2 std, 4 opt.) 5.5 x 7.5" (140 x 445mm)

Extenda-Stick* (opt.): 4x60" (102mm x 1.52m)

Wrist-O-Twist* (opt.): 4x7.5" (102 x 191mm)

Single-acting hydraulic cylinders for axle oscillation lock.

Axle-lock (2): 3.5 x 5.35: (89 x 136 mm)

Level Grading Capabilities U.S. (Metric)

Style of dipper: Rigid Extenda-Stick*

Type of bucket	Excav.	Excav.	Ditch*
LA Max. equipment height in level-grading use	20'5" (6.22 m)	15'9" (4.80 m)	16'3" (4.95 m)
LB Min. radius of level-grading cut	9'3" (2.82 m)	7'11" (2.41 m)	8'4" (2.54 m)
LC Max. length of level-grading cut	16'8" (5.08 m)	18'1" (5.51 m)	17'11" (5.46 m)
LD Depth below ground of level-grading cut	4'5" (144 mm)	0 (0)	0 (0)

* Ditching bucket with Wrist-O-Twist*

Cylinder cycle times: (full stroke seconds)

	Standard	Dual Flow
Hoist cylinder		
Extend	10.7	6
Retract	7.0	4.3
Tool cylinder		
Extend	4.8	2.7
Retract	3.8	2.2
Backhoe dipper cylinder		
Extend	9.0	4.6
Retract	6.4	4.3
Extenda-Stick* arm (opt.)		
Extend	4.1	
Retract	3.1	
Wrist-O-Twist* (opt.)		
Extend	3.5 (approx.)	
Retract	2.5 (approx.)	

Breakout Force

Dipper cylinder:

Extenda-Stick* extended: 11,442 lbf (50,897 N)

Extenda-Stick* retracted: 15,596 lbf (69,374 N)

Bucket:

Standard pin position: 19,822 lbf (88,173 N)

Power pin position: 23,298 lbf (103,635 N)

Swing System

360° continuous @ 11.5 rpm. Positive operator control with

hydraulic motor, disc brake, 24.23:1 gear reducer.

Swing torque: 24,884 lb/ft (33,738 Nm)

Outriggers

2 standard, 4 optional. Individually or simultaneously controlled

from cab. Lowering time 5.0 seconds; Raising time 5.5 seconds

Transmission

Make and model Clark R18624

Type 6-speed power shift

Converter size 12.6" (320 mm)

Gear Ratios	High	Low
1st	3.94:1	8.81:1
2nd	2.00:1	4.49:1
3rd	0.70:1	1.58:1



BADGER

EQUIPMENT COMPANY

Custom Built in America. For Today. For the Future.



217 Patneau Drive
Winona, Minnesota 55987

Phone: (507) 454-1563

Fax: (507) 453-6441

www.badgerequipment.com